



Project:	
Catalog#:	
Notes:	Date:
Type:	

LED SHOEBOX / PARKING LOT / AREA LIGHT



Round/Square Straight-Arm Yoke Slip-Fitter



APPLICATIONS

- SHOPPING CENTERS
- AIRPORTS
- PARKING LOTS
- PUBLIC PARKS
- STREET LIGHTS
- LARGE OUTDOOR AREAS
- SCHOOLS
- WALKWAYS
- TENNIS COURTS
- CAR DEALERSHIPS
- BASKETBALL COURTS
- OTHER OUTDOOR APPLICATIONS



KEY FEATURES

CONSTRUCTION

Die-Cast aluminum housing w/corrosion resistant Bronze powder coating. Easy to open driver box. Optional On/Off Photocell Sensor. Suitable for outdoor windy/wet location. Replaces Street or Vapor Lamps reliably.

OPTICAL SYSTEM

Type III Lens Optics come standard. High performance SMD3030 chips. Light distribution is spread even & glare-free over a wide-area. Waterproof LED Chips.

CERTIFICATION

UL and DLC Premium Listed, CE, RoHS, FCC listed; with LM79 & LM80, IP66 Rated, & IK09 Rated.

ELECTRICAL

Luminaire is available in: 100W/150W/200W/300W
 10KA Surge Protection. 120-277VAC
 High lumen efficacy 145+lm/W, 0-10V Dimming Driver.
 Optional: Photocell / Motion Sensor

INSTALLATION

Easy installation. several types of mounting brackets available for various surfaces: Slip-Fitter & Pole Mount(Square / Round). No exposed wires for long life performance. Flicker free. CCT: 5000K.

WARRANTY

Industry leading Five (5) year manufacturer warranty in the USA.

ORDERING

MODEL NUMBER(S)

MODEL NUMBER	POWER	LUMENS PER WATT	LUMENS	VOLTAGE	COLOR TEMPERATURE	OP-TICS	CRI	LIFE HOURS
HG-SL-100WL5D-50K	100 Watts	145 LPW	15,112 LM	120-277V	50=5000K	TYPE III	70+	50,000 HRS.
HG-SL-150WL5D-50K	150 Watts	145 LPW	22,845 LM	120-277V	50=5000K	TYPE III	70+	50,000 HRS.
HG-SL-200WL5D-50K	200 Watts	145 LPW	30,241 LM	120-277V	50=5000K	TYPE III	70+	50,000 HRS.
HG-SL-300WL5D-50K	300 Watts	145 LPW	45,326 LM	120-277V	50=5000K	TYPE III	70+	50,000 HRS.

100W LED SHOEBOX LIGHT

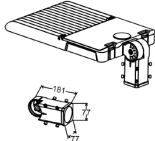
PERFORMANCE DATA



MOUNTING TYPES

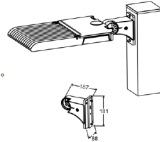
Bracket A

Slip Fitter
Application: Round Pole
Adjustable range: -90° to +90°
Division: 8°



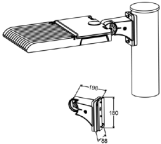
Bracket C

Adjustable Square bracket
Application: Square Pole
Adjustable range: -90° to +90°
Division: 8°



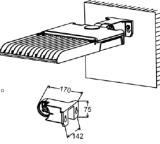
Bracket D

Adjustable Pole bracket
Application: Round Pole
Adjustable range: -90° to +90°
Division: 8°

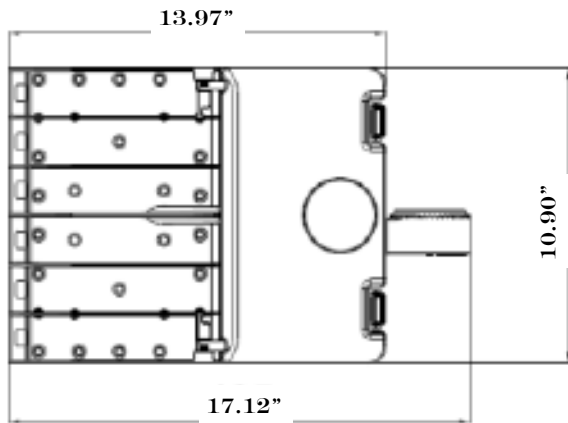


Bracket E

YOKE bracket
Application: Wall mount
Adjustable range: -90° to +90°
Division: 8°

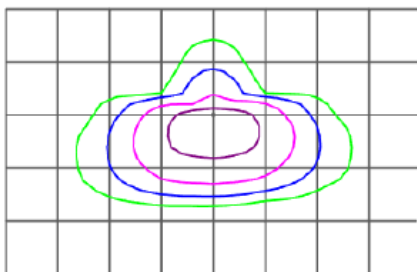


DIMENSIONS



DISTRIBUTION DATA

TYPE 3



MODEL TECHNICAL SUMMARY

HG-SL-100WL5D-50K	
INPUT WATTS	100 Watts
INPUT VOLTAGE	120-277V
POWER FREQUENCY	50 / 60 HZ
EFFICACY	145 lm/W
LED CHIPS	SMD 3030 LEDS
LED DRIVER	CONSTANT POWER
DELIVERED LUMENS	15,112 LM
COLOR TEMPERATURE	50K=5000K
CRI	70+
WORKING TEMPERATURE	-30°C - +50°C
STORAGE TEMPERATURE	-30°C - +70°C
IP RATING	IP66 / Wet Location
CERTIFICATION	UL CE FCC DLC PREMIUM
WARRANTY TIME	5 Years
OPTIONAL ACCESSORY	Photocell / Motion Sensor
DIMMABLE	0-10V-Dimming
BEAM ANGLE	Type III Optics (standard)
THD	≤15%
SURGE PROTECTION	6KV
POWER FACTOR	>0.90
L70 (HOURS)	50,000 Hrs.
DIMENSIONS (L*W*H) INCHES	13.97" * 10.90"* 2.95"
FINISH	B=Bronze

DLC PREMIUM LISTING



HG-SL-100WL5D-50K702T3-[S3,S4][BR,BK,GR,WH]-[Blank,SP]
[Blank,L,M,S]
Manufacturer: UFO LIGHTING INC
Brand: HG

PRODUCT OVERVIEW

Classification	Premium
Primary Use	Outdoor Pole/Arm-Mounted Area and Roadway Luminaires
Reported Input Wattage	100.1 W
Reported Light Output	15112.5 lm
Reported CCT	5000 K
Reported CRI (Ra)	70

PRODUCT INFORMATION

Manufacturer	UFO LIGHTING INC
Brand	HG
Model Number	HG-SL-100WL5D-50K702T3-[S3,S4][BR,BK,GR,WH]-[Blank,SP] [Blank,L,M,S]
Parent	No
Classification	Premium
DLC Family Code	TTVVUU
Input Power Type	AC

150W LED SHOEBOX LIGHT

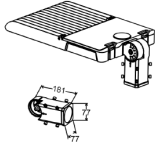
PERFORMANCE DATA



MOUNTING TYPES

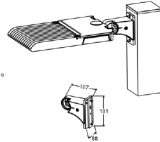
Bracket A

Slip Fitter
Application: Round Pole
Adjustable range: -90° to +90°
Division: 8°



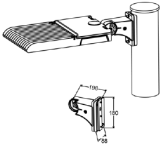
Bracket C

Adjustable Square bracket
Application: Square Pole
Adjustable range: -90° to +90°
Division: 8°



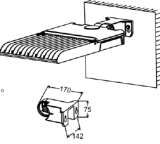
Bracket D

Adjustable Pole bracket
Application: Round Pole
Adjustable range: -90° to +90°
Division: 8°

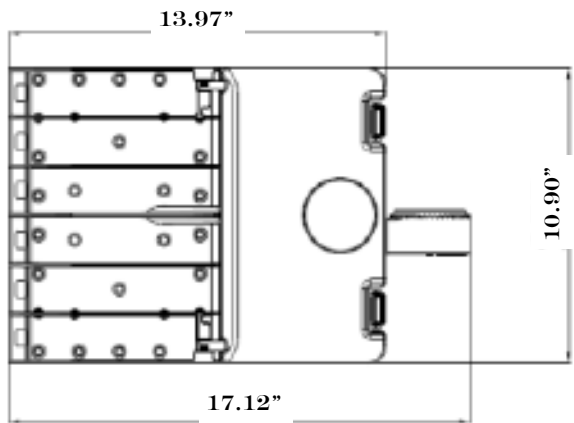


Bracket E

YOKE bracket
Application: Wall mount
Adjustable range: -90° to +90°
Division: 8°

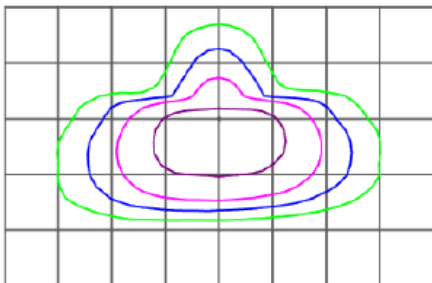


DIMENSIONS



DISTRIBUTION DATA

TYPE 3



MODEL TECHNICAL SUMMARY

HG-SL-150WL5D-50K	
INPUT WATTS	150 Watts
INPUT VOLTAGE	120-277V
POWER FREQUENCY	50 / 60 HZ
EFFICACY	145 lm/W
LED CHIPS	SMD 3030 LEDS
LED DRIVER	CONSTANT POWER
DELIVERED LUMENS	22,845 LM
COLOR TEMPERATURE	50K=5000K
CRI	70+
WORKING TEMPERATURE	-30°C - +50°C
STORAGE TEMPERATURE	-30°C - +70°C
IP RATING	IP66 / Wet Location
CERTIFICATION	UL CE FCC DLC PREMIUM
WARRANTY TIME	5 Years
OPTIONAL ACCESSORY	Photocell / Motion Sensor
DIMMABLE	0-10V-Dimming
BEAM ANGLE	Type III Optics (standard)
THD	≤15%
SURGE PROTECTION	6KV
POWER FACTOR	>0.90
L70 (HOURS)	50,000 Hrs.
DIMENSIONS (L*W*H) INCHES	13.97" * 10.90"* 2.95"
FINISH	B=Bronze

DLC PREMIUM LISTING



HG-SL-150WL1D-50K702T3-[M3,M4][BR,BK,GR,WH]-[Blank,SP]
[Blank,L,M,S]
Manufacturer: UFO LIGHTING INC
Brand: HG

PRODUCT OVERVIEW	
Classification	Premium
Primary Use	Outdoor Post/Arm-Mounted Area and Roadway Luminaires
Reported Input Wattage	151.9 W
Reported Light Output	22845.8 lm
Reported CCT	5000 K
Reported CRI (Ra)	70

PRODUCT INFORMATION	
Manufacturer	UFO LIGHTING INC
Brand	HG
Model Number	HG-SL-150WL1D-50K702T3-[M3,M4][BR,BK,GR,WH]-[Blank,SP] [Blank,L,M,S]
Parent	No
Classification	Premium
DLC Family Code	TTTTUUU
Input Power Type	AC

200W LED SHOEBOX LIGHT

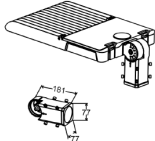
PERFORMANCE DATA



MOUNTING TYPES

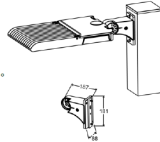
Bracket A

Slip Fitter
Application: Round Pole
Adjustable range: -90°~+90°
Division: 8°



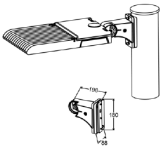
Bracket C

Adjustable Square bracket
Application: Square Pole
Adjustable range: -90°~+90°
Division: 8°



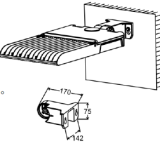
Bracket D

Adjustable Pole bracket
Application: Round Pole
Adjustable range: -90°~+90°
Division: 8°

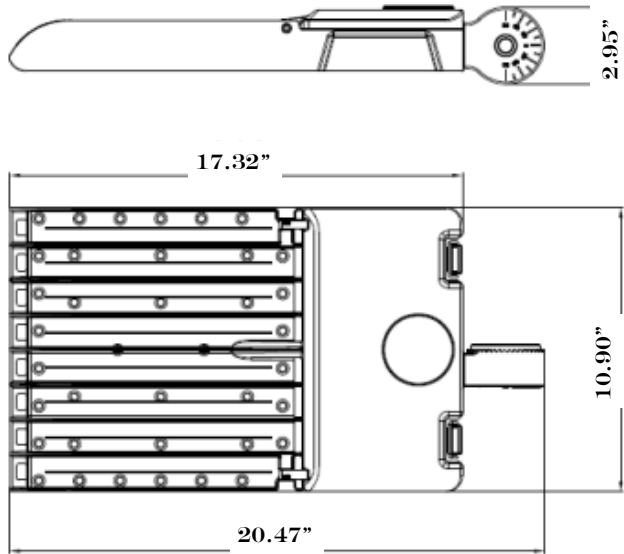


Bracket E

YOKE bracket
Application: Wall mount
Adjustable range: -90°~+90°
Division: 8°

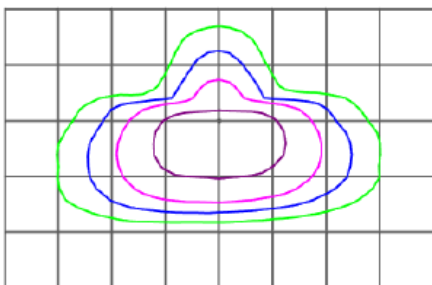


DIMENSIONS



DISTRIBUTION DATA

TYPE 3



MODEL TECHNICAL SUMMARY

HG-SL-200WL5D-50K	
INPUT WATTS	200 Watts
INPUT VOLTAGE	120-277V
POWER FREQUENCY	50 / 60 HZ
EFFICACY	145 lm/W
LED CHIPS	SMD 3030 LEDS
LED DRIVER	CONSTANT POWER
DELIVERED LUMENS	30,241 LM
COLOR TEMPERATURE	50K=5000K
CRI	70+
WORKING TEMPERATURE	-30°C - +50°C
STORAGE TEMPERATURE	-30°C - +70°C
IP RATING	IP66 / Wet Location
CERTIFICATION	UL CE FCC DLC PREMIUM
WARRANTY TIME	5 Years
OPTIONAL ACCESSORY	Photocell / Motion Sensor
DIMMABLE	0-10V-Dimming
BEAM ANGLE	Type III Optics (standard)
THD	≤15%
SURGE PROTECTION	6KV
POWER FACTOR	>0.90
L70 (HOURS)	50,000 Hrs.
DIMENSIONS (L*W*H) INCHES	17.32" * 10.90"* 2.95"
FINISH	B=Bronze

DLC PREMIUM LISTING



HG-SL-200WL5D-50K702T3-[M3,M4][BR,BK,GR,WH]-[Blank,SP]
[Blank,L,M,S]
Manufacturer: UFO LIGHTING INC
Brand: HG

PRODUCT OVERVIEW	
Classification	Premium
Primary Use	Outdoor Pole/Arm-Mounted Area and Roadway Luminaires
Reported Input Wattage	200.7 W
Reported Light Output	30241.5 lm
Reported CCT	5000 K
Reported CRI (Ra)	70

PRODUCT INFORMATION	
Manufacturer	UFO LIGHTING INC
Brand	HG
Model Number	HG-SL-200WL5D-50K702T3-[M3,M4][BR,BK,GR,WH]-[Blank,SP] [Blank,L,M,S]
Parent	No
Classification	Premium
DLC Family Code	TTTTUUU
Input Power Type	AC

300W LED SHOEBOX LIGHT

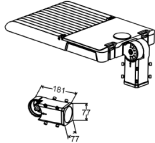
PERFORMANCE DATA



MOUNTING TYPES

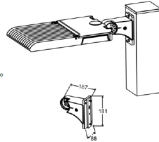
Bracket A

Slip Fitter
Application: Round Pole
Adjustable range: -90° to +90°
Division: 8°



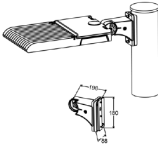
Bracket C

Adjustable Square bracket
Application: Square Pole
Adjustable range: -90° to +90°
Division: 8°



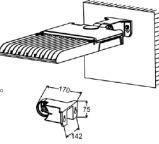
Bracket D

Adjustable Pole bracket
Application: Round Pole
Adjustable range: -90° to +90°
Division: 8°

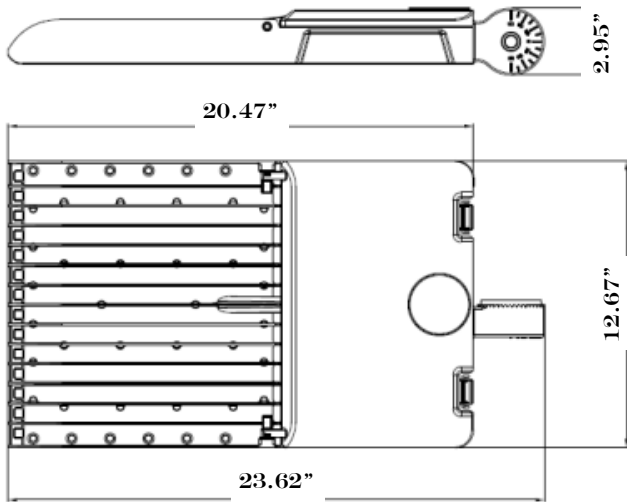


Bracket E

YOKE bracket
Application: Wall mount
Adjustable range: -90° to +90°
Division: 8°

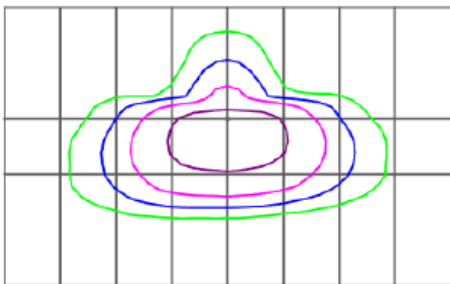


DIMENSIONS



DISTRIBUTION DATA

TYPE 3



MODEL TECHNICAL SUMMARY

HG-SL-300WL5D-50K	
INPUT WATTS	300 Watts
INPUT VOLTAGE	120-277V
POWER FREQUENCY	50 / 60 HZ
EFFICACY	145 lm/W
LED CHIPS	SMD 3030 LEDS
LED DRIVER	CONSTANT POWER
DELIVERED LUMENS	45,326 LM
COLOR TEMPERATURE	50K=5000K
CRI	70+
WORKING TEMPERATURE	-30°C - +50°C
STORAGE TEMPERATURE	-30°C - +70°C
IP RATING	IP66 / Wet Location
CERTIFICATION	UL CE FCC DLC PREMIUM
WARRANTY TIME	5 Years
OPTIONAL ACCESSORY	Photocell / Motion Sensor
DIMMABLE	0-10V-Dimming
BEAM ANGLE	Type III Optics (standard)
THD	≤15%
SURGE PROTECTION	6KV
POWER FACTOR	>0.90
L70 (HOURS)	50,000 Hrs.
DIMENSIONS (L*W*H) INCHES	20.47" * 12.67"* 2.95"
FINISH	B=Bronze

DLC PREMIUM LISTING



HG-SL-300WL5D-50K702T3-[L3,L4][BR,BK,GR,WH]-[Blank,SP]
[Blank,L,M,S]
Manufacturer: UFO LIGHTING INC
Brand: HG

PRODUCT OVERVIEW	
Classification	Premium
Primary Use	Outdoor Pole/Arm Mounted Area and Roadway Luminaires
Reported Input Wattage	299.81 W
Reported Light Output	45326 lm
Reported CCT	5000 K
Reported CRI (Ra)	70

PRODUCT INFORMATION	
Manufacturer	UFO LIGHTING INC
Brand	HG
Model Number	HG-SL-300WL5D-50K702T3-[L3,L4][BR,BK,GR,WH]-[Blank,SP] [Blank,L,M,S]
Parent	No
Classification	Premium
DLC Family Code	TTTTVUJ
Input Power Type	AC